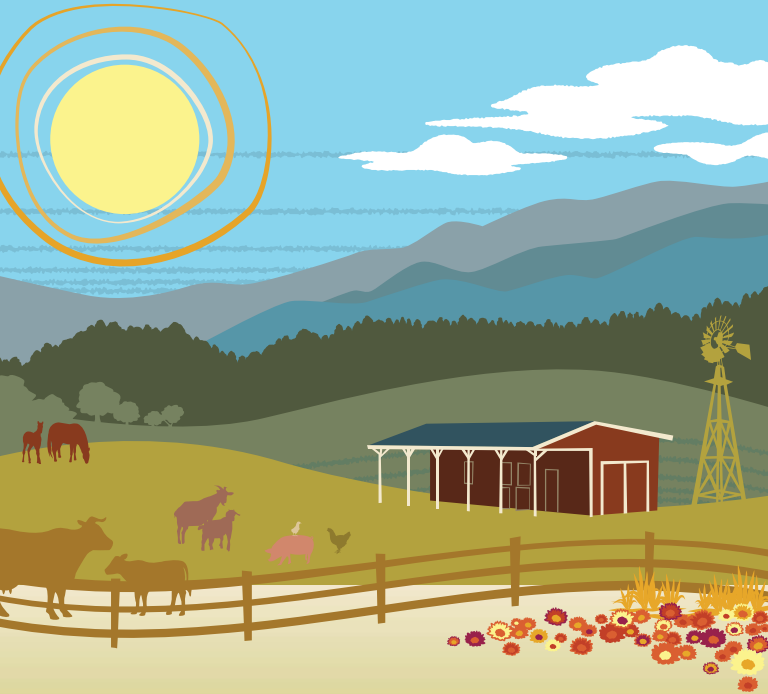


CULPEPER HARVEST DAYS FARM TOUR 28 YEARS



SEPTEMBER 20TH-21ST

SATURDAY & SUNDAY

10AM-4PM



www.culpeperfarmtour.com

PLAN YOUR FARM TOUR EXPERIENCE

GREEN THUMBS

- Bees & Trees Farm (p. 12)
- George Washington Carver Center (p. 16)
- Oak Shade Farm (p. 21)
- Windmill Heights Garden Center (p. 23)

SHOWCASING HORSES

- Cornerstone Horsemanship (p. 13)
- Ironwood Farm (p. 18)

FARM ANIMALS

- Bees & Trees Farm (p. 12)
- Kildee Farms – The Barn (p. 19)
- Moving Meadows Farm (p. 20)
- Virginia Bison Co. at Cibola Farms (p. 22)

PET FRIENDLY

- Bees & Trees Farm (p. 12)
- Kildee Farms – The Barn (p. 19)
- Virginia Bison Co. at Cibola Farms (p. 22)
- Windmill Heights Garden Center (p. 23)

SIPS OF CULPEPER

Learn about Sips of Culpeper beverage exploration trail and participating locations on page 26.

PASSPORT



REMOVE THIS PAGE & FOLD TO MAKE YOUR PASSPORT

Earn 1 entry for each farm stamp received, complete the brief survey in its entirety, and be entered for a chance to win 1 of 20 cards to a participating farm's store. One Grand Prize

Winner will earn a Choose Culpeper Farms gift basket featuring products from farms throughout Culpeper County.

Return your completed passport to the Welcome Center at Culpeper Agricultural Enterprises, leave it at the last farm you visit, or mail it to the Economic Development Office.



Mail your completed passport to:
Culpeper County Economic Development
803 S. Main Street
Culpeper, VA 22701

Entries must be received by September 24, 2025 to be eligible.
Winners will be notified on or before September 26, 2025.

Name _____ Zip _____

Email address _____
(We respect your privacy and do not share your information with anyone, ever)

1. How did you hear about the Culpeper Harvest Days Farm Tour?

____ Friend ____ Print Ad ____ Radio ____ Online Ad ____ Facebook
____ Other _____
(Please fill in name of other source.)

2. Number of Visitors represented with this Passport _____

3. Please select the items you participated in while visiting the Farm Tour.

____ Meals ____ Lodging ____ Gas ____ Shopping ____ Entertainment
Total Spent \$ _____

RULES & ELIGIBILITY

- Earn 1 entry for each farm stamp received.
- Winners will receive 1 of 20 gift cards to a participating farm's store. Grand Prize winner will receive Choose Culpeper Farms gift basket.
- Entrants must be at least 18 years of age.

Turn in passport page at the last farm you visit, the Welcome Center, or by mail.



WELCOME CENTER at Culpeper Agricultural Enterprises on Route 29

CULPEPER HARVEST DAYS FARM TOUR 28 YEARS



The Culpeper Harvest Days Farm Tour is an event from the Choose Culpeper Farms program

PARTICIPATING FARMS

	PAGE NUMBER	MAP NUMBER	OPEN SATURDAY	OPEN SUNDAY
Welcome Center at Culpeper Agricultural Enterprises	8	1	★	★
Bees & Trees Farm	12	2	★	★
Cornerstone Horsemanship	13	3	★	★
CULPEPER COUNTY MAP	14			
George Washington Carver Center	16	4	★	★
Ironwood Farm	18	5	★	★
Kildee Farms	19	6	★	★
Moving Meadows Farm	20	7	★	★
Oak Shade Farm	21	8	★	★
Virgina Bison Co.	22	9	★	★
Windmill Heights Garden Center	23	10	★	★
Piedmont Railroaders	24	1	★	★

Directions listed on each farm's page start from Culpeper Agricultural Enterprises.

There is no charge for entry into any of the farms on the Culpeper Harvest Days Farm Tour and most of the activities and demonstrations are free. Some of the farms are offering additional concessions, crafts, gift items, amusements, or products for sale. Some of the food sales benefit charity. The Farm Tour will take place rain or shine. Please be advised, some activities and individual farms may be closed as a result of inclement weather.



Explore the heart of Culpeper County's thriving agricultural community with Choose Culpeper Farms. This program is dedicated to shining a spotlight on our local farms, agricultural products, and community events. It's all about building connections between residents and the farms that keep our community vibrant.

WHY CHOOSE CULPEPER FARMS?

Agriculture isn't just part of our heritage—it's the backbone of our local economy. As the number one industry in both the county and the state, agriculture plays a crucial role in our daily lives. Through Choose Culpeper Farms, we aim to celebrate this by bringing greater recognition to the farmers, growers, and producers who make it all possible.

DISCOVER LOCAL FARMS & PRODUCTS

Visit our website to explore a wide variety of farms and learn about the fresh, local products and services they offer. Whether you're interested in purchasing fresh produce, exploring local nurseries, or finding farms open to the public year-round, our site has all the information you need.

JOIN THE FUN AT LOCAL FARM EVENTS

Our event calendar highlights exciting farm happenings throughout the year, including the annual Culpeper Farm Tour organized by the Economic Development Department. These events offer a chance to experience farm life, meet local producers, and learn more about where your food comes from.

Choose Culpeper Farms is your gateway to agriculture in Culpeper—start exploring today!



AGRICULTURE IN CULPEPER: BY THE NUMBERS

Agriculture is more than a tradition, it's the foundation of Culpeper's economy, environment, and way of life. As the county's leading industry, agriculture plays a key role in supporting local jobs, strengthening the economy, and ensuring access to fresh, locally grown food. These facts from the most recent Agricultural Census, offer a snapshot of Culpeper's thriving ag community and the vital role it plays in our everyday lives.

There are more than **600 farms** in Culpeper County

92% of farms are family farms

The Market Value of products sold in Culpeper County in 2022 was **\$73,823,000**

Culpeper is ranked 2nd in the state in sales from nurseries, greenhouses, and floriculture

Top local products include cattle, hay, poultry, grains, and vegetables

Agriculture is the #1 industry in both Culpeper County and the Commonwealth of Virginia

115,816 acres of Culpeper County (nearly half) is farmland

LOVE LOCAL: SUPPORTING AGRICULTURE YEAR-ROUND

You don't have to live on a farm to support agriculture in Culpeper County. Whether you're shopping, dining, learning, or exploring, small choices can make a big difference. Here are five simple ways you can get involved and help keep local farming strong, sustainable, and thriving year-round:

1 SHOP DIRECT FROM LOCAL FARMS

Buy fresh produce, meats, dairy, and flowers straight from the source. Visit farm stores, roadside stands, and farmers markets to support growers in your own backyard.

2 JOIN A CSA (COMMUNITY SUPPORTED AGRICULTURE)

Enjoy weekly or seasonal boxes of fresh food while supporting farmers upfront. It's a great way to try new things and eat with the seasons.

3 ATTEND LOCAL FARM EVENTS

From fall festivals to planting workshops, many farms host events that are fun, family-friendly, and educational. Keep an eye on our calendar at ChooseCulpeperFarms.com.

4 FOLLOW AND SHARE ON SOCIAL MEDIA

Like, comment, and share local farm content to help them reach new customers and stay connected with the community.

5 LEARN ABOUT LOCAL FARMS THROUGH OUR SPOTLIGHTS

Our Choose Culpeper Farms spotlights introduce you to the people and stories behind our local farms. Discover their history, what they grow, and how they serve the community. Explore spotlights on our website and social media!

BEHIND THE FARM GATE: LOCAL SPOTLIGHTS

Get to know some of the farms that help shape Culpeper's agricultural landscape. Each farm has its own story, passion, and role in keeping our community rooted in local food and traditions.



Growing Together: The Family Behind Anchor Mere Farm



Mystic Hill Farms – A Blend of Heritage, Excellence, and New Beginnings

Discover other Culpeper farms and read full-length spotlights on our website. From multi-generational operations to specialty producers and small family farms, each story offers a unique look at the people, practices, and passion behind local agriculture.

Scan the QR code to
start exploring



GET INVOLVED WITH AGRICULTURE-FOCUSED COMMUNITY GROUPS

Agriculture-focused community groups are champions of our farming community. They provide resources, education, and advocacy to help farmers thrive and to keep the community connected.

Whether you're a farmer, a supporter of local agriculture, or simply interested in learning more, there are many ways to get involved.

CULPEPER SOIL & WATER CONSERVATION DISTRICT

The Culpeper Soil and Water Conservation District provides agricultural cost sharing through the Best Management Practices Program, technical assistance for landowners regarding conservation and natural resource management, and reviews site plans for erosion and sediment control and stormwater management. CSWC also provides educational programs for classrooms, homeschool, Scout, civic, and garden groups.

FRIENDS OF THE RAPPAHANNOCK

Friends of the Rappahannock is a non-profit organization with a mission to be the voice and active force for a healthy and scenic Rappahannock River. The organization works through advocacy, restoration, and education. Friends of the Rappahannock hosts a variety of events including tree planting events, river service days, litter cleanup, and hikes.

RAPIDAN RIVER MASTER GARDENERS

Rapidan River Master Gardeners mission is to educate residents about safe, effective, and sustainable garden management practices. Master Gardeners receive extensive training through research-based horticultural information from the Virginia Cooperative Extension Office and Virginia Tech and work throughout the year volunteering in programs that demonstrate safe, effective, and sustainable garden management practices.

THE MINORITY AND VETERAN FARMERS OF THE PIEDMONT

The Minority and Veteran Farmers of the Piedmont (MVFP) is a non-profit organization serving the Piedmont Region of Virginia. Established to develop educational and experiential learning opportunities through hands-on instruction, MVFP offers training, coaching, and mentoring for veterans, farmers, and youth in urban and rural areas. MVFP welcomes visitors to their garden at the George Washington Carver Center where they recently paid homage to George Washington Carver with peanut, cotton, and sweet potato plants.

VIRGINIA COOPERATIVE EXTENSION

Virginia Cooperative Extension is an educational outreach program of Virginia's land-grant universities: Virginia Tech and Virginia State University. A dynamic organization, the Cooperative offers technical advice on agriculture to farmers, and supplies them with the necessary inputs and services to support their agricultural production. Extension experts focus on, among other subjects, food safety and quality, plight of young children, revitalizing rural America, sustainable agriculture, and waste management.

4-H/YOUTH

The youth development education program of Virginia Cooperative Extension, 4-H is rich with learning experiences in which young people partner with caring adults and volunteers in a unique fellowship. Through 4-H, young people are encouraged to participate in a variety of activities that emphasize 4-H's "learning by doing" philosophy of youth development.

www.chooseculpeperfarms.com



Visit our website to explore the various agriculture-focused community organizations in Culpeper County. You'll find information on how to join, volunteer opportunities, and upcoming events. Together, we can ensure that agriculture remains a vital and vibrant part of our community for generations to come.



WELCOME CENTER AT CULPEPER AGRICULTURAL ENTERPRISES

Contact: Winona Pritts, (540) 423-4432
Email: wpritts@culpepercounty.gov
www.culpeperfarmtour.com
www.choosculpeperfarms.com
10220 James Monroe Hwy (Route 29)
Culpeper, VA 22701

Participating Saturday & Sunday. Gates close at 4 p.m.

Established in 1956 by stockholders investing in support of a facility for regional feeder cattle marketing and youth livestock shows, its current facilities and land base is ideally situated along route 29 just south of Culpeper for excellent visibility and access.

Culpeper Agricultural Enterprises is home to the Culpeper Madison Feeder Cattle Association sales, the Culpeper Madison Rappahannock Farm Show, the Culpeper Fireman's Carnival, and agricultural events including tractor pulls, livestock shows, purebred cattle sales and dispersals, poultry and equipment auctions. It is home to the longest running bull test sale in the United States and is a product of forward thinking citizens who planned for the future. Its board of directors is pleased to host the Welcome Center of the 2025 Culpeper Farm Tour.

SITE ACTIVITY

- **Face Painting:** FREE facepainting Saturday 10 a.m.–3 p.m. and Sunday 10 a.m.–2 p.m.
- **Pick up:** Farm Tour brochures and passports, coloring books, and kid's activities
- **Visit:** Antique tractor display & Piedmont Railroaders (see page 24)
- **For Sale:** A limited supply of Farm Tour t-shirts available for sale (\$15)

Directions: Culpeper Agricultural Enterprises is conveniently located off Route 29, just south of the Culpeper exits.

CULPEPER FARM CORNER

Visit with and learn about additional Culpeper County farms and purchase some of your favorite products right at the Welcome Center. Some of this year's participating farms include: Anchor Mere Farm, Azalea Field Flowers, Mystic Hills Farm, Seek Lavender, and Sunshine Acres Farm.

CULPEPER FARM BUREAU



Virginia Farm Bureau is not just for farmers—and it's not just about insurance. For decades, Farm Bureau has been a powerful advocate for Virginia agriculture, working to ensure farming remains viable and vibrant for generations to come. Through programs that support leadership, education, innovation, and advocacy, Farm Bureau helps agriculture prosper while improving life for all Virginians. From young farmers and women leaders to policy champions and innovation advisors, Virginia Farm Bureau uplifts the agricultural community and keeps safe, fresh, locally grown food on our tables.

Culpeper Farm Bureau is proud to support our local agricultural community and is especially passionate about building connections with new and small-scale farmers. From backyard growers to beginning producers, they're here to help you grow—offering resources, support, and a strong local network. They are committed to promoting Culpeper's hardworking farmers and strengthening the future of agriculture in our region.

SITE ACTIVITY

Stop by for a mix of fun, learning, and old-fashioned charm! Enjoy ongoing hands-on activities the whole family will love:

- **Corn Boxes** – Dig, bury, and explore! Their 6x6 corn boxes are filled with real corn kernels for a sensory experience perfect for kids.
- **Bird Feeders** – Create your own pinecone bird feeder using bird seed and take it home to feed your feathered friends.
- **Corn Husk Dolls** – Craft a traditional corn husk doll and learn about this classic piece of American farm history.

Scheduled Activities:

- **Saturday 12 p.m.:** Ice Cream Making – Join them for an interactive demonstration using ice, rock salt, and simple ingredients to make fresh ice cream.
- **Sunday 12 p.m.:** Butter Making – Shake things up and make your own jar of butter to take home—just like they did in the old days!



VIRGINIA AGRICULTURAL EDUCATION

AGRICULTURE EDUCATION & FFA IN CULPEPER

FFA Culpeper County High School:
Laura DeLano, David Maitland, Tyler Foster

FFA Eastern View High School:
Melessa Suder, Biran Duncan, Laura Dorrian

FFA Culpeper Middle School: Amber Gillen

FFA Floyd T. Binns Middle School: Cecilia Vega Coronado

Agriculture education and FFA programs continue to grow in Culpeper County, with 16 agriculture courses offered at the middle and high school levels.

FFA members participate in local, state, and national competitions developed by industry professionals, building real-world skills and leadership experience. In addition to competitions, students give back to the community, volunteering their time at events like the Fall Festival and Spring Fling, and supporting organizations such as the warming shelter and Culpeper County Parks and Recreation.

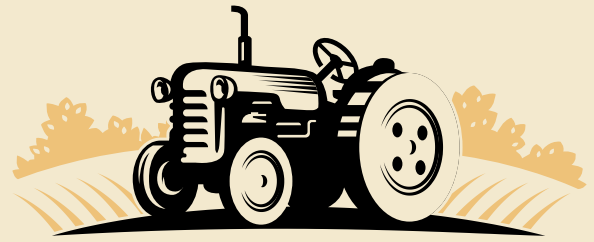
Students also showcase their knowledge at NEXUS events, hosted at the Culpeper Technical Education Center and sponsored by local nonprofit Career Partners. Both high schools have on-site greenhouses and host public plant sales each spring as part of their hands-on learning.

SITE ACTIVITY

- Meet FFA members from Culpeper County's four school chapters
- Learn about ag education, competitions, and career pathways
- Explore student displays and hands-on demonstrations
- Grab free materials and giveaways at the Welcome Center

Scheduled Activities:

- **Saturday:** Eastern View High School: Interactive agriculture-themed activities for kids
- **Sunday:** Culpeper County High School: Create your own "chia pet" planter! Guests can decorate a container with faces and googly eyes, then add soil and grass seed to grow fun, green "hair."
- **Sunday, 10 a.m.–1 p.m.:** Floyd T. Binns Middle School & Culpeper Middle School



FARMING THEN & NOW

Farming has always been at the heart of Culpeper County. The antique tractors at our Farm Tour Welcome Center represent more than machinery; they tell the story of generations of farmers who adapted with the times, embraced innovation, and fed our community through changing landscapes. From hand tools to horsepower to hydraulics, agriculture continues to evolve while holding fast to the values that built it: hard work, stewardship, and resilience.



Griffwood Farm

Owner: Taye Griffin

Maple Springs Farm

Owner: Charlie Harlow

Rock Hill Farm

Owner: Jack E. Hawkins

DID YOU KNOW?

- The earliest tractors in America were steam-powered and appeared in the late 1800s.
- Gas-powered tractors became common on farms in the 1920s, revolutionizing productivity.
- Many antique tractors are still fully operational today and are maintained by farmers and collectors who value their history and craftsmanship.
- From 1901 through much of the 20th century, J.A. Swan Jr. & Co. in downtown Culpeper was a go-to destination for farmers across Virginia, and even out of state, seeking the latest agricultural equipment. From horse-drawn plows to cutting-edge tractors, the store played a major role in advancing modern farming in the region. The Swan family of Glebe Farm has preserved pieces of that legacy, collecting artifacts and memorabilia from their time operating J.A. Swan Jr. & Co. to honor their family's role in Culpeper's agricultural history.



BEES & TREES FARM

Contact: Teresa and Jeff Gregson, (540) 423-9020
18028 Carrico Mills Road, Elkwood, VA 22718
Email: Teresa@BeesAndTrees.biz
www.BeesAndTrees.biz

Participating Saturday & Sunday. Gates close at 4 p.m.

Set on 43 acres with a pastoral view of the Blue Ridge Mountains, Bees & Trees is a working farm that features honeybee hives, chickens, animals to pet (mini donkeys and goats), a farm store, an Airbnb, and a wedding venue! Handicapped parking is available. Please drive up to the house where you will be directed.

SITE ACTIVITY

- **Food:** Law Dawg Hot Dogs, Tha Muncheez (Philly cheese steaks, burgers, and more), and Travelin' Tom's Coffee (coffee, lattes, cappuccinos and more) will be on site both days. Shaded seating available.
- **Farm Store:** Open from 10am-4pm both days offering cold drinks, honey, butters, local wines, Black Angus beef, fresh eggs and gift items.
- **Hard Cider Tasting:** Son Of A Bear will be providing a FREE tasting of their hard ciders and cysers (cider/honey meade mixture)—for those 21+
- **Barrel Train Rides:** (\$5/ride) Rides run on the quarter hour.
- **Hay Rides:** Rides run on the hour.
- **Vendors:** This year we have gathered some amazing new vendors that make flintlock guns, pottery and knives! They will join our annual vendors, the wonderful blacksmiths from Dragon's Breath Forge! There'll be plenty of opportunity to interact and purchase their handcrafted wares.

Scheduled Activities

- **11 a.m.** – Inside The Wonderful World of Honeybees: Learn about bees in the hive and their jobs. Weather permitting, we will open the hives.
- **1 p.m.** – Honey Extraction Demonstration: Our beekeepers will demonstrate how to extract honey, and attendees will be able to sample delicious raw honey!

Directions from Culpeper Agricultural Enterprises: North on US-29 for 4.1 miles. Take US-522/VA 3 exit toward Mineral/Fredericksburg. Make right on Germanna Highway/VA 3 and proceed for approximately 7½ miles. Make a left on Carrico Mills Road/State Route 669. The farm is approximately 1½ miles on the left.

MAP
NUMBER

2



CORNERSTONE HORSEMANSHIP

Contact: Charles & Michele Pellham, (540) 292-5213
5229 Homestead Trail, Reva, VA 22735
Email: cornerstonehorsemanship@gmail.com

Participating Saturday & Sunday. Gates close at 4 p.m.



Charles and Michele Pellham established Cornerstone Horsemanship to give young horses a solid start under saddle, teach horsemanship across disciplines, and bring thoughtful training methods to the show world. They specialize in versatility ranch horse events, ranch riding and trail obstacles, starting performance horses, and introducing horses to cattle and bison. With over 50 years of experience, they offer monthly training, lessons, clinics, and an extensive tack store on-site.

This year, Cornerstone Horsemanship is proud to host a sanctioned East Coast Stock Horse Association (ECSHA) show during the Culpeper Farm Tour weekend.

Now in its 12th year, ECSHA offers a family-friendly, affordable, and fun environment to promote the versatility of the western stock horse. The association showcases stock horses of all breeds and provides opportunities for riders to earn year-end awards, including saddles, buckles, and other gear. Shows include multiple divisions and both cattle and non-cattle ranch horse classes.

SITE ACTIVITY

- Enjoy a full day of live ranch horse competitions during the ECSHA-sanctioned show
- Explore the extensive horse tack store open to the public


Note: Shows begin at 8 a.m. both days with cattle classes. Please feel free to stop by before the Farm Tour officially begins at 10a.m. More information and the full class order is available at www.eastcoaststockhorse.com.

Directions: Heading South on 29 turn right onto State Route 633. Turn left on State Route 644. In 3.5 miles turn right onto Homestead Trail.

3

MAP
NUMBER

13

 Sips of Culpeper


 Animals


 Children's Activities

FARM TOUR

 Food Vendors

 Plant Nursery

 Model Trains

 Pets Welcome

While the Welcome Center is located at Culpeper Agricultural Enterprises, we invite you to start the tour at any of the participating farms.

★ Welcome Center at Culpeper Agricultural Enterprises, Antique Tractor Display, and Piedmont Railroaders ...	PAGE 8, 11, 24
② Bees & Trees Farm	12
③ Cornerstone Horsemanship	14
④ George Washington Carver Center	16
⑤ Ironwood Farm	18
⑥ Kildee Farms - The Barn	19
⑦ Moving Meadows Farm	20
⑧ Oak Shade Farm	21
⑨ Virginia Bison Co. at Cibola Farms .	22
⑩ Windmill Heights Garden Center ..	23





GEORGE WASHINGTON CARVER CENTER

Contact: Gretchen Ledmor, (540) 727-3435 ext. 337
9432 James Madison Hwy, Rapidan, VA 22733
Email: gretchen@gwcarc.org
www.gwcarc.org

Participating Saturday & Sunday. Gates close at 4 p.m.

The George Washington Carver Center is currently used as a research and education center to develop new knowledge and opportunities for agriculture, entrepreneurship, and natural conservation. Located at the historic George Washington Carver Regional High School, the Carver Center is home to the Carver 4-County Museum, Friends of the Rappahannock, Culpeper's Virginia Cooperative Extension Office, Rapidan River Master Gardeners, Minority & Veteran Farmers of the Piedmont, and the new George Washington Carver Food Enterprise Center.

Note: Informational booths for on-site organizations will be located near the front of the property. Golf cart and tractor-pulled wagon rides will be available for guests to explore the gardens, nurseries, and activities located at the back of the school.

Inside, the 4-County Museum will be open for the event.

SITE ACTIVITY

Carver Food Enterprise Center (CFEC)

The Carver Food Enterprise Center includes a 6,200 square foot food shared commercial kitchen, food business incubator, and classroom. Opened in partnership with Virginia Cooperative Extension and Culpeper County in 2023, the facility assists growers, food business owners, entrepreneurs, and organizations.

Tour Carver Food Enterprise Center's commercial kitchen space, learn about opportunities for value-added food production, and taste samples of Farm to School recipes made with local ingredients.

Culpeper Virginia Cooperative Extension Office - Culpeper County 4-H
Meet friendly show animals, give them a gentle pet, and discover how youth of all ages can get involved in 4-H programs across the county.

Directions from Culpeper Agricultural Enterprises: Take Route 29 north and exit onto 299. Follow 299 to Route 15. Make a right on Route 15 and follow for a little under 5 miles. School is on the left.

Culpeper Virginia Cooperative Extension Office - Rapidan River Master Gardeners

Rapidan River Master Gardeners' mission is to educate residents about safe, effective, and sustainable garden management practices. Enjoy garden tours, hands-on kids' activities, and live demonstrations showcasing creative ideas for small-space and backyard gardening.

Virginia State University – Small Farm Outreach Program

Stop by Virginia State University's informational table to learn about their Small Farm Outreach Program, which provides valuable technical assistance, training, and resources to small-scale and underserved farmers across Virginia.

Friends of the Rappahannock

Friends of the Rappahannock is a non-profit organization with a mission to be the voice and active force for a healthy and scenic Rappahannock River. Visit their booth to explore the Rappahannock Conservation Nursery, learn about tree plantings for working landscapes and schools, and discover how to support clean water through native plantings and healthy farming practices!

Minority & Veteran Farmers of the Piedmont

The Minority & Veteran Farmers of the Piedmont is a non-profit with a mission to create awareness of rural living and its environmental benefits to ensure local food access and security to help build strong youth and healthy families. MVFP will offer tours of their gardens at the Carver Center. Guests can sample herbs and explore demonstration beds and connect with experienced growers offering information on sustainable farming practices and local food networks.

New Pathways Tech (Saturday Only)

Take a guided tour of the New Pathways Tech facilities and learn about their hands-on vocational training programs, and how the work of machinists helps sustain our farming community.

George Washington Carver Regional High School Alumni Association

The George Washington Carver Regional High School Alumni Association aims to keep the memory of George Washington Carver alive, connecting students who attended the regional high school, managing the 4-County Museum, and now offering scholarships to support youth seeking higher education.

The Carver 4-County Museum located in the original library of the former George Washington Carver Regional High School, documents, celebrates, and shares the educational, social, cultural, and military history and accomplishments of students, their parents, faculty, administrators, and supporters of the Carver school, the first and only institution of secondary education constructed in Virginia to serve minority students from 1948-68 in the four-county region of Culpeper, Orange, Madison, and Rappahannock. Step into the Carver Museum where alumni will be on hand to share the rich history of the school and its legacy in the community.



IRONWOOD FARM

Contact: Margaret Bogle, (540) 729-4430
10291 Homeland Road, Rixeyville, VA 22737
Email: ironwoodfarmva@aol.com
www.ironwood-farm.com

Participating Saturday & Sunday. Gates close at 4 p.m.



Ironwood Farm has been serving the equestrian community since 1998, specializing in breeding, training, and selling Norwegian Fjord horses. Encompassing 132 acres of rolling hills, woods and streams, Ironwood Farm is the largest Norwegian

Fjord Horse farm in Virginia. Norwegian Fjords are a light draft breed known for their good temperament and versatility under saddle or in harness. Originally domesticated over 4,000 years ago, the Norwegian Fjord Horse is one of the world's oldest and purest breeds. Our horses compete in dressage, driving, eventing, and draft. Ironwood Farm sells Norwegian Fjord horses throughout the United States and has been recognized by the Norwegian Fjord Horse Registry as an ambassador for our breed.

SITE ACTIVITY

- Fjords, including foals, will be available to see and to touch throughout the day.
- Printed materials on the breed including coloring pages for children will be available throughout the weekend.

Scheduled Activities

- **11 a.m. & 2 p.m.** – Riding and driving demonstrations, followed by an opportunity to take pictures with Fjord horses.

Directions from Culpeper Agricultural Enterprises: Heading North on Route 29, turn left on Mountain Run Lake Road. At the end of the road, turn right onto Norman Road. At the end of Norman Road, turn left onto Sperryville Pike. Turn right onto Route 629 (Scotts Mill Road). Follow for 3 miles then turn left onto Route 729 (Eggbornsville Road). Follow for 4 miles and turn right just after Gourdvine Church, onto Route 627 (Homeland Road). Farm will be in ¼ mile on the left. Look for yellow Farm Tour directional signs at entrance. Handicap parking available. Please follow directional signs.

MAP
NUMBER

5



KILDEE FARMS – THE BARN

Contact: Wayne and Joyce Brown, (540) 219-1381
19295 Batna Road, Culpeper, VA 22701
Email: Kildeefarms@gmail.com

Participating Saturday & Sunday. Gates close at 4 p.m.

The Brown Family at Kildee Farms is a small working farm preserving the past. The farm's name came from the original owners around 1920. The Kildee birds were everywhere and so it was appropriate! Our grandchildren are the 4th generation to work the farm. Originally there were six different small farms added to a total of 600 acres. Dairy was the biggest enterprise, along with beef heard and hogs. Several years of dry weather and debt changed everything. We now farm 95 acres, which is still a good size farm to raise kids. There are 3 working barns full of antique tools, equipment, and livestock to view how farm life has evolved.

Come, relax, and enjoy farming of yesterday!

SITE ACTIVITY

- **Food:** Seasonal food available for purchase.
- **View:** Antique tractors, combine, thrashing machine, 2 row corn pickers, and hand crank corn shellers from the 1840's to the 1950's.
- **Tour:** Ongoing barn tours of old style barn full of antique tools and equipment. Its original goal was to educate children on the history of farming but because of its unique charm, it has become a "party barn" for wedding and receptions. Additional barns have beef cows, calves, and pigs. We have a new old barn, we describe as a barn, museum, and a castle—unlike any other barn you have ever seen.
- Hay Rides
- **For Sale:** Pumpkins from 2-acre pumpkin patch available for purchase.*

*Cash only for purchases

Directions from Culpeper Agricultural Enterprises: Take 29 North to Route 3 Exit. Make a right on Route 3 East and follow approximately 6 miles. Make a right on Batna Road (Route 663) ¾ mile on the left is Kildee Farms

6

MAP
NUMBER



MOVING MEADOWS FARM

Contact: Wally Hudson, (540) 317-5862
14151 Loyds Lane, Culpeper, VA 22701
Email: wallyhud@gmail.com
www.movingmeadowsfarm.com
FB: MovingMeadowsFarm

Participating Saturday & Sunday. Gates close at 4 p.m.

Learn how Moving Meadows Farm produces pasture raised natural meats using sustainable practices. Providing our animals fresh paddocks daily provides optimal animal, soil, water and wildlife health. Moving Meadows raises grass-fed beef, free range chickens and eggs. With the goal of providing customers with products raised sustainably and with the customer's health in mind, we do not use any chemicals or GMOs.

SITE ACTIVITY

- **Food:** Burgers and drinks
- **Tours:** Hay rides and tours of the farm every hour (at the top of the hour)
- **For Sale:** Farm fresh meat and eggs, and farm mugs available for purchase
- Kids activities available
- Live music

Scheduled Activities

Join Wally Hudson for onsite cooking classes on the farm.

- **11:30 a.m.** – Learn to cook the perfect steak
- **1:30 p.m.** – Learn how to cut up a chicken

Directions to the Farm from Culpeper Agricultural Enterprises:

Take 29 North. Make a left onto Mountain Run Lake Road (Route 718). Follow 3.2 miles. Make a right onto Norman Road (Route 633). Follow 2 miles. Turn left on Sperryville Pike (Route 522). Travel 0.4 miles, and turn left on Loyds Lane. Follow 0.7 miles (staying left) to farm driveway.

MAP
NUMBER

7

OAK SHADE FARM

Contact: Ulrike Mello, (540) 229-1943
14455 Waterford Run Lane, Rixeyville, VA 22737
Email: oakshadefarm@gmail.com
www.oakshadechristmastreefarm.com

Participating Saturday & Sunday. Gates close at 4 p.m.

Oak Shade Farm is a family operation, designed from its founding in 1985 to employ a beautiful bit of land in the support of a growing family. Christmas Trees are the main crop today, but family members also operate a sawmill and small woodworking business, grow shiitake mushrooms, keep honey bees, create hooked rugs and paintings, and produce handwoven items on three looms. Points of interest are the firepit, looking west to the Blue Ridge mountains, a lavender patch, and a solar array that powers the farm operations. The Treehouse sales shop displays the jams, honey, wooden bowls, charcuteries, and other items, all made on the farm.

Oak Shade Farm was one of the original four farms on the Culpeper Farm Tour back in 1998. The Tour has grown a lot since then but Oak Shade has stayed pretty much the same. Come and see for yourself.

SITE ACTIVITY

- **Tours:** Enjoy tours every 30 minutes!
- **For Sale:** Gift shop will be open with wooden crafts, heritage crafts, art, honey, and jam available for purchase.
- **Food:** Complementary popcorn available! Water bottles for sale \$1.

Scheduled Activities

- **10 a.m., 11:30 a.m., 2 p.m., 3:30 p.m.** – Wood Working
- **10:30 a.m., 12 p.m., 1 p.m., 2:30 p.m.** – Shiitake Mushroom Farming
- **11 a.m., 12:30 p.m., 1:30 p.m., 3 p.m.** – Christmas Tree Farming

Directions from Culpeper: Head North on 29. Take the first exit to Madison Road. Continue on Main Street, heading straight through the traffic circle in about 2.5 miles. Continue on Main Street/Rixeyville Road (VA-229). In 8 miles turn left onto Waterford Road toward VA-611. Waterford Run Lane and Oak Shade Farm are one mile up on route 611.

* Not located on Oak Shade Farm Private Lane

8

MAP
NUMBER



VIRGINIA BISON CO. AT CIBOLA FARMS

Contact: Rob Ferguson, (540) 212-9455
10075 Stone Bridge Road, Culpeper, VA 22701
Email: farm@virginiabison.com
www.virginiabison.com

Participating Saturday & Sunday. Gates close at 4 p.m.



Virginia Bison Co. at Cibola Farms has been supplying bison meat to the Washington, DC and Northern Virginia region since 1999. The Farm which is operated by Mike Sipes and Rob Ferguson includes 300 bison on 500 acres of grass pastures. A wide range of meat cuts, sausage, and jerky are available for retail sales at the farm store, online for home delivery, and

through buying clubs and drop off locations. Virginia Bison Co. at Cibola Farms raises quality natural meats under the principles of ecological and sustainable agricultural practices by keeping waste nutrients out of the Chesapeake Bay watershed. Composting systems are employed and livestock are rotationally grazed to spread nutrients and allow grass time to recuperate. Humane handling in a natural and low-stress environment is a key element of Virginia Bison Co. practices.

SITE ACTIVITY

- **Food:** Buffalo burgers, chili, and hot dog lunch available.
- **Tours:** Ongoing tours and discussions on bison will be taking place throughout the day.
- **Farm Store:** Meat sales and non-food items (including bison leather, skulls, etc) will be available throughout the weekend at the farm store.
- Farmette animals that include pigs, goats, dairy cows, chickens will be on display.

Directions from Culpeper Agricultural Enterprises: Take 29 North. Make a left onto Mountain Run Lake Road. Follow approximately 2.5 miles. Make a right onto Norman Road. Follow approximately 2 miles. Turn left on Sperryville Pike/Route 522. Turn right on Route 629 (Scotts Mill Road). Go about 1.5 miles to Virginia Bison Co. at Cibola Farms sign on the right at Stone Bridge Road.

WINDMILL HEIGHTS GARDEN CENTER

Contact: Paul Hutcheson, (540) 825-2059
1901 Broad Street, Culpeper, VA 22701
Email: windmillheightsgardencenter@gmail.com
www.windmillheights.com

Participating Saturday & Sunday. Gates close at 4 p.m.



Windmill Heights Garden Center is a family-owned greenhouse and garden center that has been in business for 60 years. Tucked behind a neighborhood, it has been called "Culpeper's Hidden Treasure" by customers visiting from around the area.

Featuring 8 different greenhouses, Windmill Heights prides itself on growing plants of exceptional beauty and quality, growing and selling a broad range of plants including flowers, herbs, vegetables, perennials, trees, and indoor plants. Seasonally, Windmill Heights offers fall blooming mums, poinsettias, and Christmas wreaths. The garden center offers fun workshops, events, and educational classes throughout the year.

SITE ACTIVITY

- Free kids craft activity ongoing all day both days.
- **For Sale:** All regular inventory will be available for sale.

Scheduled Activities

- **10 a.m., 11 a.m., 1 p.m., and 2 p.m.** – Guided tours of our native pollinator garden. Learn about how to attract birds, bees, and butterflies to your yard by planting native plants.

Directions from Culpeper Agricultural Enterprises: Heading North on Route 29, take the first exit at US-29 Bus-Culpeper. Follow for 2 miles and turn right onto Fredericksburg Road. Take a slight right onto Broad Street. Garden Center will be at the back edge of neighborhood.



PIEDMONT RAILROADERS

Contact: Jim Baird, (540) 439-3357
P.O. Box 69, Bealeton, VA 22712
Email: livesteam36@verizon.net
www.trainweb.org/PiedmontRR



Participating Saturday & Sunday. Gates close at 4 p.m.

The Piedmont Railroaders is an organization for railroad enthusiasts of all ages. Founded in Warrenton, Virginia in 1995, the group provides a place where members can share their interests in railroading through various community activities such as public train shows and town-supported festivals.

The Farm Tour is pleased to have the Piedmont Railroaders display their delightful elaborate model train layouts at the Welcome Center. Railroads have been synonymous with agriculture throughout American history. They are vital to transport grains, livestock, equipment, seed, supplies, fertilizer, wood products, milk—virtually everything produced by or needed on the farm.

The Piedmont Railroaders will offer a "HO, N, O, and G" gauge layouts.

SITE ACTIVITY

Train displays on Saturday and Sunday.

Located at Culpeper Agricultural Enterprises: Take 29 South, past Culpeper exits. Culpeper Agricultural Enterprises is on the left at 10220 James Monroe Highway. Look for signs.

MAP
NUMBER

1

OTHER THINGS HAPPENING

CULPEPER DOWNTOWN FARMERS MARKET

Saturday 7:30 a.m.–12 p.m.
318 S. West Street, Culpeper, VA 22701
crievents@culpeperdowntown.com
(540) 825-4416



Culpeper Downtown Farmers Market, brought to you by Culpeper Renaissance Inc., provides an opportunity for the community and visitors to purchase fresh and locally grown fruits, vegetables, plants, and flowers, along with baked goods, eggs, meats and hand-crafted specialty products.

Find the Market in operation every Saturday morning, rain or shine, May through October, 7:30 a.m. to 12 p.m. In addition to the 45 full and part-time vendors in attendance, the Culpeper Downtown Farmers Market offers unique and exciting children's programs and special events!

I'M SOW HEALTHY

Join their 'I'm SOW Healthy' series of FREE, kid's cooking classes every 2nd Saturday at the Culpeper Downtown Farmer's Market



Farm Fresh Dollars for Kids Program

The I'm SOW Healthy Youth Nutrition program also provides Farmers Market Activity Packs which include a recipe, activity sheet and \$5 Farm Fresh Dollars. Farm Fresh Dollars can be spent at the Market all season long, on food/food producing plants. Farmers Market Activity Packs can be claimed once a month by children ages 2 to 13 at the green Market Information Tent! Brought to you by Culpeper Renaissance, Inc., PATH Foundation and Kid Central.



CONTACT US

Winona Pritts

Culpeper County Economic Development
803 S. Main Street, Culpeper, VA 22701
(540) 423-4432



EMBARK ON A JOURNEY OF TASTE AND EXPLORATION ON THE NEW CULPEPER BEVERAGE EXPLORATION TRAIL.

Discover the craftsmanship behind 8 unique locations, highlighting the 8 wineries, breweries, and distilleries, in Culpeper County. From bustling downtown spots to tranquil farmland and majestic mountain vistas, each stop on the trail promises a unique experience. Visit, enjoy, and earn unique Sips of Culpeper gear and prizes.



BEER HOUND BREWERY

201 Waters Place, Suite 102, Culpeper, VA 22701

Monday & Tuesday: Closed

Wednesday: 3–8 p.m.

Thursday–Saturday: 11:30 a.m.–10 p.m.

Sunday: 11:30 a.m.–5 p.m.

A micro-brewery located in downtown Culpeper, Virginia, Beer Hound Brewery is a unique pup themed brewery, with beers named after famous and not so famous hounds in movies, history, and favorite 4-legged customers. Beer Hound offers a relaxed atmosphere with a dart room, and activity themed nights such as karaoke and country western line dancing.



BELMONT FARM DISTILLERY

13490 Cedar Run Road, Culpeper, VA 22701

Monday: Closed

Tuesday–Saturday: 11 a.m.–5 p.m.

Sunday: Closed

Recognized as being home to the first legal moonshine in America, Belmont Farm Distillery has been featured on Discovery's Moonshiners and offers Tim Smith's Climax in their extensive lineup. Belmont Farm uniquely preserves the national tradition of distilling whiskey in a copper pot. The farm offers tours to learn about their distilling process and sample tasting.

Saturday, September 20th: Enjoy live music, catering from The Knights of Columbus, and free shots of Bourbon today only.



DEATH RIDGE BREWERY

5393 Higher Ground Trail, Jefferson, VA 22724

Monday & Tuesday: Closed
 Wednesday & Thursday: 4 p.m.–8 p.m.
 Friday & Saturday: 12–9 p.m.
 Sunday 11 a.m.–6 p.m.

Nestled in the little town of Jeffersonton, the Death Ridge Brewery property contains the meandering stream “Deatherage Run”, named after brothers who settled in Culpeper County in 1675. The working farm property honors history, with the brewery built on a Civil War campsite, and is known for its live music.



FAR GÖHN BREWING COMPANY

301 South East Street, Culpeper, VA 22701

Monday: Closed
 Tuesday–Thursday: 3–9 p.m.
 Friday: 3–10 p.m.
 Saturday: 12–10 p.m.
 Sunday: 12–8 p.m.

Far Göhn is a “Tavern Brewery” in downtown Culpeper that celebrates German immigrant contributions to American beer while embracing global styles. Serving beer all made onsite, Far Göhn offers a rotating weekly tap list, in addition to local wine and cider.



MOUNTAIN RUN WINERY

10753 Mountain Run Lake Road, Culpeper, VA 22701

Monday–Thursday: Closed
 Friday–Sunday: 12–7 p.m.

Set on a 125-year-old farm, Mountain Run is a quintessential family-operated farm winery. Opened in 2016, Mountain Run is known for its unique 1950’s corn crib tasting room and wide range of award-winning wines, meads, and hard ciders. Now serving beer as well, Mountain Run embraces the properties agricultural heritage, while providing visitors with beautiful views, a family and pet friendly atmosphere, and a plethora of events.



OLD HOUSE VINEYARDS

18351 Corkys Lane, Culpeper, VA 22701

Monday: 12–5 p.m.
 Tuesday: Closed
 Wednesday: 12–5 p.m.
 Thursday & Friday: 12–8 p.m.
 Saturday & Sunday: 12–6 p.m.

Old House Vineyard began their journey to what we know today, with the restoration of an 1800’s farmhouse into an inviting gathering place for the enjoyment of good food and wine. Over 20 years of growth, Old House Vineyard became Virginia’s First Trifecta: Winery, Brewery, and Distillery operation. Today, the vineyard offers weddings under their elegant gazebo, surrounded by a beautiful pond. In addition to events hosted at the property, Old House offers a wine club for their regular customers.



OLD TRADE BREWERY & CIDERY

13270 Alanthus Road, Brandy Station, VA 22714

Monday-Thursday: Closed

Friday: 3–10 p.m.

Saturday: 11 a.m.–10 p.m.

Sunday: 11 a.m.–7 p.m.

Old Trade Brewery & Cidery is a family and pet friendly operation. The property has been home to the outskirts of the Brandy Station Battle of the civil war, and is currently a farm that houses fruiting trees, grapevines, fruiting bushes, beehives, gardens, and free roaming poultry. In the onsite tasting room you can try hand-crafted beer, cider, and wine, order a bite to eat, and relax with live music, playgrounds for kids, and ax throwing. Ingredients yielded from the farm and regional farms are incorporated into the food and beverages offered.



WAR CRAFT BREWERY & WINERY

7851 White Oak Road, Rapidan, VA 22733

Monday-Thursday: Closed

Friday: 3:00-9:00pm

Saturday: 12:00pm-10:00pm

Sunday: 12:00pm-6:00pm

WAR Craft offers a brewery, cidery, and the winery at Rapidan. The veteran owned farm sits on top of the remnants of an old Civil War hospital and stables. Focused on providing the highest quality of ingredients and locally grown organic fruit, the farm offers craft beer, wine, slushies, sangria, and cider.

HOW IT WORKS

The passport offers a fun and engaging way to track your journey. As you venture out, pick up a Tier 1 passport at your first location and earn 5 stamps to unlock a special Sips of Culpeper wine tumbler as a token of appreciation. Once you've received your glass, pick up your Tier 2 passport and continue your exploration. Collect 7 stamps on your Tier 2 passport, and you'll earn yourself a limited edition 2025 Sips of Culpeper hat, showcasing your pride in Culpeper's beverage heritage.

Passports are valid through December 31, 2025.

Purchase one (1) drink at 5 of 8 participating businesses and receive a commemorative Sips of Culpeper glass for Tier 1.

5 LOCATIONS = GLASS

Customers can turn in their passport at any participating business after receiving their completed stamps.

VISIT

Beer Hound Brewery Belmont Farm Distillery Death Ridge Brewery Fair Gohn Brewing Company

Purchase one (1) drink at 7 of 8 participating businesses and receive a commemorative Sips of Culpeper hat for Tier 2.

7 LOCATIONS = HAT

Customers can turn in their passport at any participating business after receiving their completed stamps.

VISIT

Beer Hound Brewery Belmont Farm Distillery Death Ridge Brewery Fair Gohn Brewing Company

Mountain Run Winery Old House Vineyards Old Trade Brewery & Cidery War Craft Brewery



**SIPS OF CULPEPER
GEAR/PRIZES AND SHOW
YOUR LOVE FOR LOCAL
CULPEPER LIBATIONS**



The Culpeper Harvest Days Farm Tour

**is part of the Choose
Culpeper Farm program
which connects residents
with the rich agricultural
heritage of Culpeper
County.**

Discover local farms, find fresh local
products, and learn about our beverage
exploration trail by visiting

ChooseCulpeperFarms.com



SIPS OF CULPEPER

BEVERAGE EXPLORATION TRAIL